



## STEEL AND POLYVINYL CHLORIDE VENTILATION VALVES

UV  
SERIES

### OVERVIEW

**TECHNICAL DATA :** Air extraction valve with external frame and fine adjustable central body. Mounting frame for duct installation with joint.

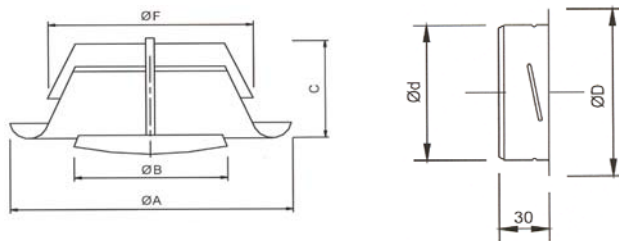
**MATERIALS:** Frame and central part manufactured from sheet steel, painted white RAL 9010 (epoxy powder treatment).

**MOUNTING FRAME:** Installation by screws on lateral side fixed directly on duct joint or on wall.

**MOUNTING VALVE:** by fixing on the mounting frame.

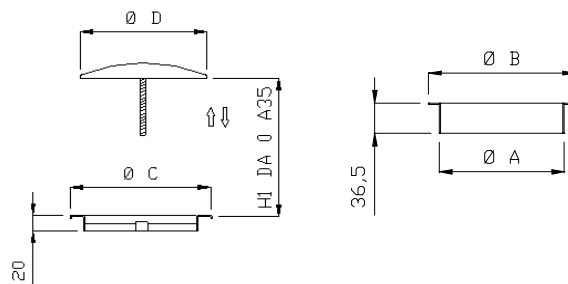
**CALIBRATION:** Manual without command.

#### UV - STEEL VALVES



UVE	Valve sizes				Collar sizes		Weight P[kg]
	D <sub>nom</sub> [mm]	Ø A [mm]	Ø B [mm]	C [mm]	Ø F [mm]	Ød [mm]	
80	115	61,5	42	77,5	79	105	0,15
100	138	75	40	97,5	99	127	0,21
125	164	99	46	122,5	124	155	0,295
150	202	119	50	147,5	149	176	0,41
160	211	129	54	157,5	159	186	0,46
200	248	157	63	197,5	199	230	0,62

#### UVP - PVC VALVES



UVP	Collar sizes		Valve sizes		Weight P[kg]
	D <sub>nom</sub> [mm]	ØA [mm]	ØB [mm]	ØC [mm]	
100	93	98	128	107	0,11
150	142	149	176	152	0,18
200	193	198	232	200	0,29



**STEEL AND POLYVINYL CHLORIDE  
VENTILATION VALVES**

**UV  
SERIES**

**PERFORMANCE**

